

Söll MultiRail

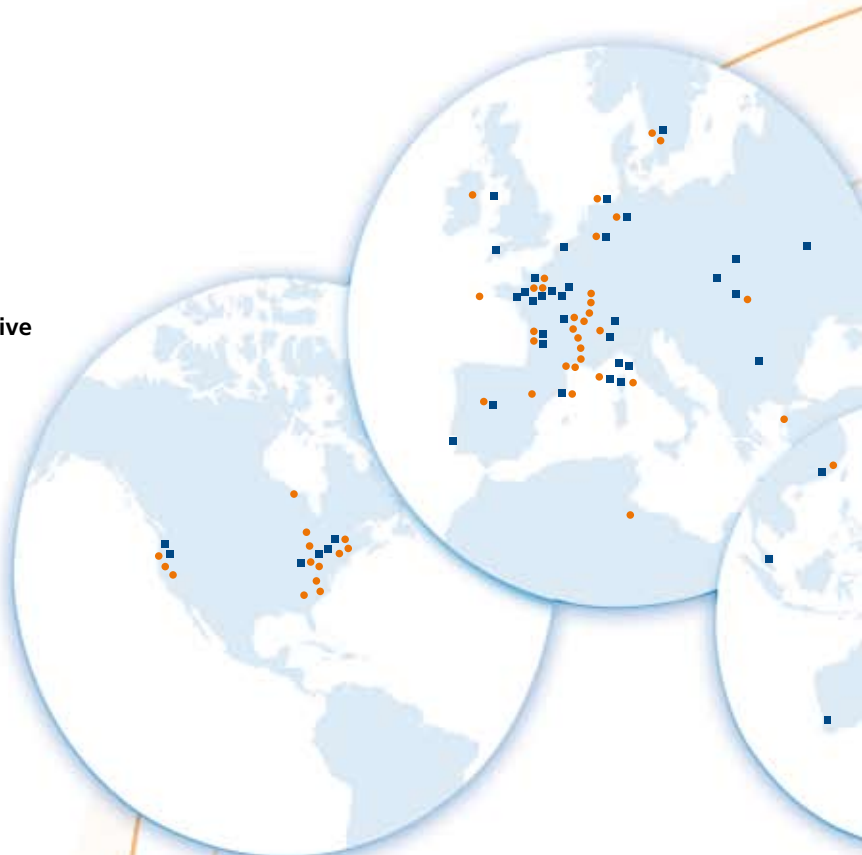
Horizontal Anchorage Device



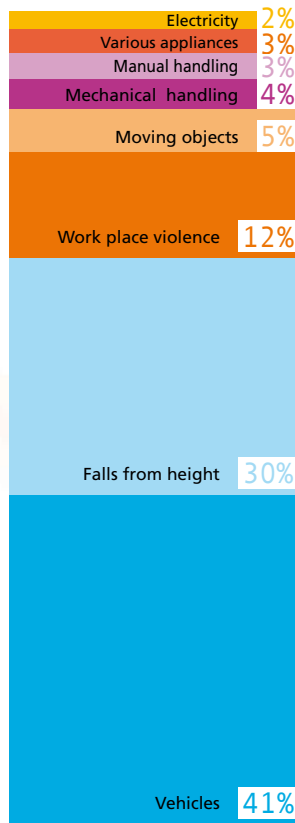
Sperian Protection

is the world's leading manufacturer of individual protective equipment intended for personal protection in the workplace or in high-risk environments. The group comprises three branches of activity; head, body and fall protection, which combine to offer complete head to toe protection.

With sales offices and factories worldwide, we are able to offer safety solutions that conform to global industry standards (CE, OSHA, CSA, ANSI, AS/NZS).



The major causes of injury in the workplace



Gravity kills!

Falls from height are the 2nd leading cause of injuries or death in the industry.

In all cases of industrial accidents, these figures highlight inappropriate working conditions, in the case of work at height however, the consequences are immediate and serious. The results are either a disabling injury or death. This creates a high risk to any employer with employees working at heights.

Around one in seven fatal industrial accidents result from a fall from height.

Defy it!

According to the European directive 89-686, fall protection measures must be put in place by the employer of any person working at height. If it is not feasible to eliminate the risk through design or engineering controls nor provide preventative measures, the employer must consider using protective systems such as the Söll MultiRail horizontal anchorage device with appropriate personal fall protection equipment.

Söll systems offer solutions that prevent workers from falling from heights and reduce the risk of injuries due to falls.



synonymous with quality

Under the umbrella of Miller by Sperian, the Söll product line offers you a broad, specialized range of fall protection systems & services. Established by Karl Söll as an industrial foundry in 1921, the firm has been developing and manufacturing ladder climbing safety systems and components for fall protection since 1969. Today the brand Miller by Sperian is synonymous with efficiency and quality in height access & fall protection solutions.

Anchorage device according to DIN EN 795 - Class D protection against falls

Söll-Anchorage devices: Safe Working At Height is our Top Priority

Söll-MultiRail is a fixed horizontal anchorage device, which functions/works on a rail basis, designed and tested to DIN EN 795 - Class D. This Rail offers the highest level of Fall Protection to people working in fall risk areas.

Horizontal anchorage devices: Where is the difference?

- Compared to anchorage points which only offer the user a limited freedom of activity depending on the length of the lanyard, MultiRail rail systems can be installed along the entire unprotected work area and offers higher safety
- Compared to cable systems and anchorage points, horizontal guided rail offers the advantage that they can be also installed as handrails
- In case of a fall, the falling forces are absorbed by several intermediate brackets and not just by both of the end-fixing devices, as it is the case with cable systems, or by a single point, as it is the case with anchorage points.
- Also, compared with traditional horizontal guided rail, MultiRail offers the advantage of greater fixing distances (up to 6 m) and can be used by more people at the same time (up to 6).
- MultiRail guided rails do not have to be serviced yearly as it must be done with cable systems - this reduces the current expenses and mitigates the higher acquisition costs.

All depends on the choice of the right system

Theoretically, most of the certified systems look fine and provide an acceptable degree of safety however, there are significant differences in their construction and use. To choose the ideal system, you must evaluate the safety criteria, functionality, handling, durability, maintenance, time, costs and the long-term benefits.



Söll MultiRail | Fittings - Advantages

System easy-to-handle

- The gliders slide smoothly on the rail following the user
- Available with/in 3 different gliders
- To be assembled at foot level on a wall or overhead
- Only few components are necessary
- The closed profile makes the product more resistant against the accumulation of dirt

Easy to install

- Big fixing distances up to 6 m reduce the assembling work
- The rail is not fixed into mounting brackets, herewith, thermal expansion is compensated for
- The use of the low friction mounting brackets means that in the event of a fall the absolute minimum impact will be transmitted to the structure
- Horizontal and vertical installation of the rail enables a greater variety of applications
- Pre-constructed corner sections allow the system to be easily customized to a structure
- The standard length of the rail is of 6m, this enables a quick assembling and cost saving, as few connecting parts are needed
- Bended rails with a radius of > 2000 mm are also available

Robust

- Can be used by up to 6 persons at the same time
- The rail can absorb forces up to 100 kg without permanent deformation
- Made of stainless steel for the toughest environmental conditions
- The energy caused by the fall is absorbed by the bending of the rail, thereby the structure remains protected

Worth Knowing

The anchorage device can/should be fixed directly near the fall protection device, so that the user can disengage from the rail when they are secured by the fall protection equipment. It is possible to assemble the rails on an incline of up to 5 degrees.

Attention! In the event of a fall where the rail is inclined consideration needs to be given to the possibility of the person's anchorage sliding along the rail and further risks or hazards this may create.

Söll MultiRail | Using and application



The openable glider can be attached anywhere on the horizontal guide rail. It can be opened or closed by turning the knurled nut.



The anchoring at the fall arrester is permitted only by using lanyards - ropes/strap belts- combined with shock absorbers according to DIN EN 355. The user must wear a full body harness according to DIN EN 361 or 358.



Beside usual lanyards, Personal Fall Limiters can be used on MultiRail-Systems, such as the Söll-Minilite, Scorpion and Black Rhino.



The MultiRail System enables to pass safely along vertical sections up to 1 m height.

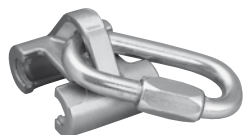
Fields of use

The MultiRail horizontal anchorage device is often used in the following sectors:

- Storefront
- Flat roofs or steep roofs
- Working platforms on masts and buildings
- Hangars, shipyards, cranes etc.
- Industrial plants



Söll MultiRail | The gliders



Closed gliders

Made of pickled stainless steel with polyamide inlays, it is also fitted with a stainless steel tube nut connector. As wheels are not necessary, it is dirt-proof as well as very light, only 400 grs. It is the most convenient solution, it can be removed from the system at the rail-ends with exit sections or remain on the rail.

Use: i.e. when MultiRail is installed in/for low use applications and when the system has defined entry and exit sections.



The new openable glider

Made of pickled stainless steel with polyamide inlays, it is also fitted with a stainless steel tube nut connector. By means of an easy to use opening and closing mechanism, it can be removed or attached anywhere along the rail offering more flexibility to the user during his work. Also its is very light, just 600 grs.

Use: i.e. when using several MultiRail Systems or when using systems with undefined entry and exit sections.



The new wheel glider

Made of pickled stainless steel with 2 bearing and 4 leading wheels, it is also fitted with a stainless steel tube nut connector. This glider may be used only for overhead purposes. It is possible to insert a retractable type fall arrester, which would enlarge the radius of activity of the worker.

Applications: when the user works beneath the MultiRail System at varying heights.

NEW



「The openable glider can be inserted in or removed from anywhere in the system.



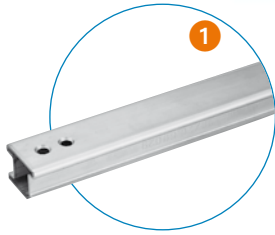
「The closed glider is inserted or removed after unlocking the end-safety stop.



「The wheeled glider can remain in the rail. It can pass through 90° curves.

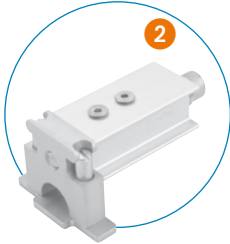


Söll MultiRail | System components



Horizontal Safety rail

Made of pickled stainless steel, available in fixed lengths of 6 m.
Also curved, with radius > 2000 mm for horizontal or vertical profiles.



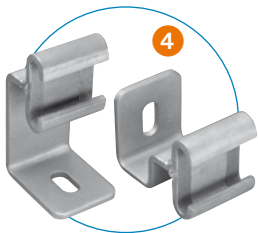
Rail end-stop with exit

Made of pickled stainless steel and anodised Aluminium. Serves as an end anchorage and can be opened to take out the glider.



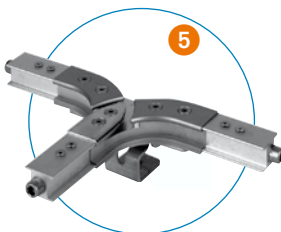
Rail end-stop without exit

Made of pickled stainless steel and anodised Aluminium. It serves as an end anchorage to prevent the glider from running out unintentionally.



Rail Support

Available in several types made of pickled stainless steel with Teflon ribbons. The rail glides smoothly in the brackets and is not subject to any constraint.



Turntable

The MultiRail turntables enable, contrary to other systems, to connect seamlessly several rail systems with each other.



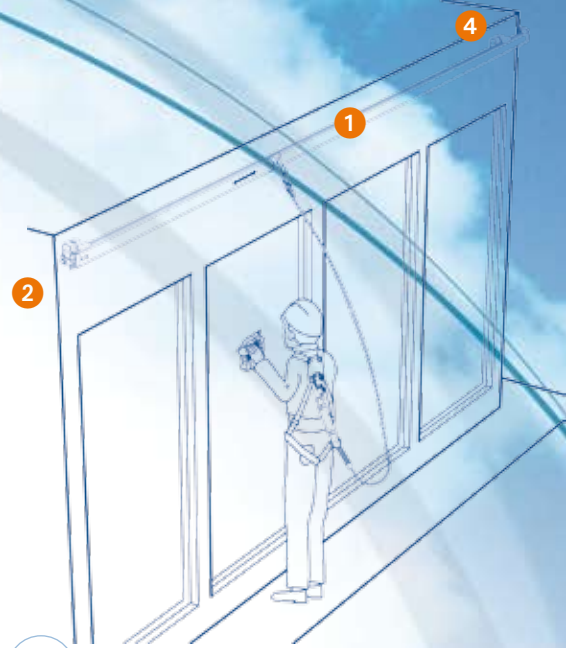
Bend for vertical or horizontal profile

Made of anodised Aluminium to circumvent the edges, R = 80 mm, 90°. Any angles from 30° to 150° are available upon request.



Connector

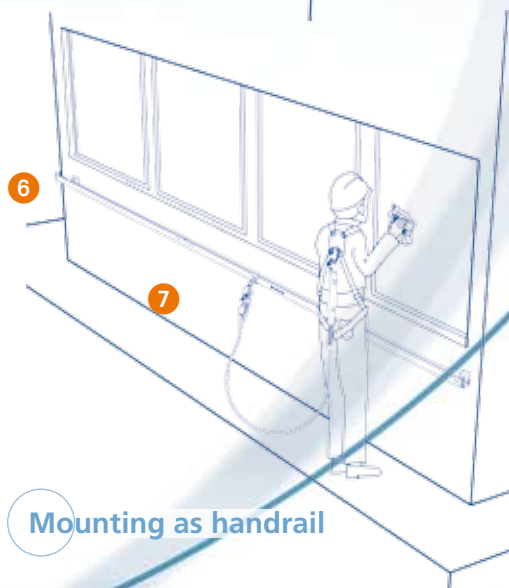
Made of anodised Aluminium to connect individual rail sections.



Overhead mounting



Floor mounting



Mounting as handrail



Söll MultiRail

The horizontal rail anchorage device

SPERIAN FALL PROTECTION
Deutschland GmbH & Co. KG
Seligenweg 10
D-95028 Hof
Germany
Tel.: 00 49 (0) 92 81 83 02-0
Fax: 00 49 (0) 92 81 36 26
soell@sperianprotection.com
www.multirail.eu

SPERIAN FALL PROTECTION
Osborn Way
Hook
Hampshire RG27 9HX
United Kingdom
Tel.: 00 44 (0) 1256 693200
Fax: 00 44 (0) 1256 693300

SPERIAN FALL ARREST SYSTEMS, INC.
1345 15th Street
Franklin
PA 16323
USA
Tel.: 001 (800) 325 6746
Fax: 001 (800) 892 4078
soell@sperianprotection.com
www.millerfallprotection.com

SPERIAN FALL PROTECTION Australia PTY LTD
3 Walker St
Braeside Victoria 3195
Australia
Australia Phone: 00 61 1300 139 166
New Zealand Phone: 00 64 0800 322 200