

# SAFETYLINK CATALOGUE



**VLIN**  
**Vertical Lifeline**



**SafetyLink®**

*Innovative  
Fall Protection*

# Contents

Got questions? Contact SafetyLink for more information



1300 789 545

## V-LINE VERTICAL LIFELINE

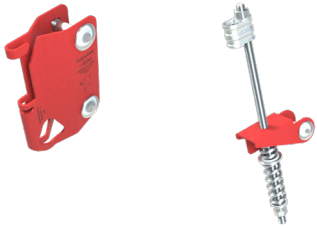
V-Line Kit: Top and Bottom Brackets (No Mounting Plates)	4
V-Line Kit: Top and Bottom Brackets (Mounting Plates)	4
V-Line Kit: Top and Bottom Brackets (Bolt on 485mm)	4
V-Line Kit: Top and Bottom Brackets (Bolt on 1575mm)	4
V-Line Shuttle	5
V-Line Cable	5
V-Line Cable with 90 Degree Cable Guide	5
V-Line Cable with Straight Cable Guide	5
V-Line Compliance Sign	6
V-Line Cable Guide Pole Bolt on Kit - 90 Degrees	6
V-Line Cable Guide Pole Bolt on Kit - Straight	6
V-Line Cable Guide Ladder Rung Bolt on Kit - 90 Degrees	6
V-Line Cable Guide Ladder Rung Bolt on Kit - Straight	6
V-Line Cable Guide Pole Mounting Bracket	6
V-Line Cable Guide Pole Mounting Bracket - Extended	6
V-Line Fixing Bracket - Top Weld On	7
V-Line Fixing Bracket - Bottom Weld On	7
V-Line Fixing Bracket - Top Pole Bolt On	7
V-Line Fixing Bracket - Bottom Pole Bolt On	7
V-Line Fixing Bracket - Top Pole Bolt On Extended	7
V-Line Fixing Bracket - Bottom Pole Bolt On Extended	7
V-Line Bolt On Steel Pole 300mm	7

V

Line

## LADDER VERTICAL LIFELINE

## V-LINE KIT: TOP AND BOTTOM BRACKETS

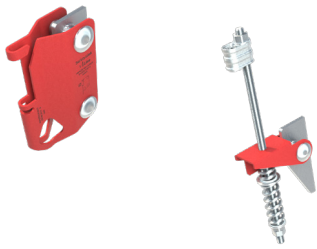


- V-Line top and bottom bracket only. Does not include mounting plates.

## PRODUCT CODE: VLINE002

Components	Description	Material	Qty
VLINE.BTM.PM	V-LINE Bottom Bracket Kit	316SS	1
VLINE.TOP.PM	V-LINE Top Bracket Kit	316SS	1

## V-LINE KIT: TOP AND BOTTOM BRACKETS WITH MOUNTING PLATES

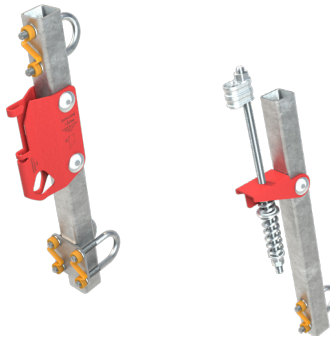


- V-Line top and bottom brackets with structural fixing mounting plates for welding to structure.

## PRODUCT CODE: VLINE003

Components	Description	Material	Qty
VLINE.BTM.PM	V-LINE Bottom Bracket Kit	316SS	1
VLINE.TOP.PM	V-LINE Top Bracket Kit	316SS	1
VLINE.PLT.BTM	V-LINE Bottom Plate	316SS	1
VLINE.PLT.TOP	V-LINE Top Plate	316SS	1

## V-LINE KIT: LADDER RUNG TOP AND BOTTOM BRACKETS - BOLT ON 485MM

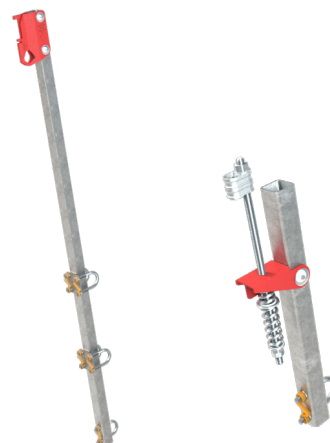


- V-Line top and bottom brackets, top bracket terminates at top rung of ladder.

## PRODUCT CODE: VLINE004

Components	Description	Material	Qty
VLINE.BTM.PM	V-LINE Bottom Bracket Kit	316SS	1
VLINE.TOP.PM	V-LINE Top Bracket Kit	316SS	1
VLINE.UBS.K	V-LINE Single U Bolt Kit	Galvanized	2
VLINE.UBT.K	V-LINE Twin U Bolt Kit	Galvanized	1
VLINE.POST.480	V-LINE Post 480mm (Top)	Galvanized	1
VLINE.POST.480B	V-LINE Post 480mm (Bottom)	Galvanized	1

## V-LINE KIT: LADDER RUNG TOP AND BOTTOM BRACKETS - BOLT ON 1575MM



- V-Line ladder rung top and bottom brackets.
- Supplied with U Bolts for fixing to ladder rungs.
- Extends above top ladder rung 900mm.

## PRODUCT CODE: VLINE005

Components	Description	Material	Qty
VLINE.BTM.PM	V-LINE Bottom Bracket Kit	316SS	1
VLINE.TOP.PM	V-LINE Top Bracket Kit	316SS	1
VLINE.UBS.K	V-LINE Single U Bolt Kit	Galvanized	2
VLINE.UBT.K	V-LINE Twin U Bolt Kit	Galvanized	2
VLINE.POST.1575	V-LINE Post 1575mm (Top)	Galvanized	1
VLINE.POST.480B	V-LINE Post 480mm (Bottom)	Galvanized	1

The SafetyLink V-Line is a Vertical Lifeline suitable for use as part of a personal fall protection system. The V-Line offers a Vertical Lifeline with one or multiple shuttles for users to attach with. The V-Line allows users to climb a vertical structure or ladder along a permanently mounted safety cable system.

Systems shall be designed to limit free fall, swing fall and maximise fall clearance. Where possible, systems should be installed as close to the centre of the ladder or climbing zone as possible.

The V-Line Vertical Lifeline shall be installed on an angle no greater than 15 degrees off vertical.

Standards: The V-Line Vertical Lifeline System is compliant with AS/NZS 1891.3 and EN353.1.

User Rating: The V-Line Vertical Lifeline is rated for up to 4 users per system with a maximum user weight of 150kg and a minimum of 50kg.



## V-LINE SHUTTLE

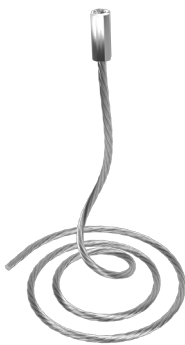


- V-Line shuttle to be connected to harness.
- Single user shuttle.

### PRODUCT CODE: VLINESHUT001

Components	Description	Material	Qty
VLINESHUT001.01	V-LINE Vertical Shuttle	Stainless Steel	1
KARBNR036	Karabiner: Steel, Dual Action, Gate 20mm, Rated 41kn	Steel	1

## V-LINE CABLE



- V-Line cable with swaged or swageless termination, advise cable length required.

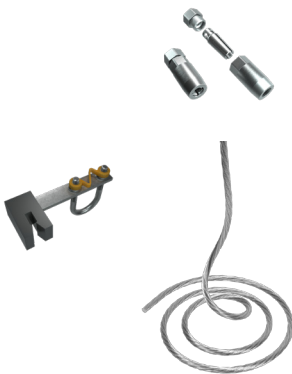
### PRODUCT CODE: VLINE.CABLE.XXX

Components	Description	Material	Qty
VLINE.SWAGE	V-LINE Swaged Termination	316SS	1
STAT.CABLE001	Cable: 8mm diameter, 7 x 7 wire rope	316SS	1

### PRODUCT CODE: VLINE.CABLE.SL.XXX

Components	Description	Material	Qty
VLINE.SWAGELESS	V-LINE Swageless Termination	316SS	1
STAT.CABLE001	Cable: 8mm diameter, 7 x 7 wire rope	316SS	1

## V-LINE CABLE WITH 90 DEGREE CABLE GUIDE



- V-Line cable with swaged or swageless termination, advise cable length required.

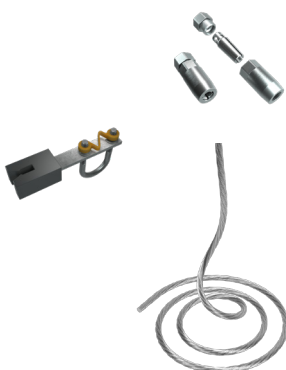
### PRODUCT CODE: VLINE.CABLE.AG.XXX

Components	Description	Material	Qty
VLINE.SWAGE	V-LINE Swaged Termination	316SS	1
STAT.CABLE001	Cable: 8mm diameter, 7 x 7 wire rope	316SS	1
VLINEGDE003	V-LINE 90 degree bolt on cable guide	Galvanized	1

### PRODUCT CODE: VLINE.CABLE.AG.SL.XXX

Components	Description	Material	Qty
VLINE.SWAGELESS	V-LINE Swageless Termination	316SS	1
STAT.CABLE001	Cable: 8mm diameter, 7 x 7 wire rope	316SS	1
VLINEGDE003	V-LINE 90 degree bolt on cable guide	Galvanized	1

## V-LINE CABLE WITH STRAIGHT CABLE GUIDE



- V-Line cable with swaged or swageless termination, advise cable length required.

### PRODUCT CODE: VLINE.CABLE.SG.XXX

Components	Description	Material	Qty
VLINE.SWAGE	V-LINE Swaged Termination	316SS	1
STAT.CABLE001	Cable: 8mm diameter, 7 x 7 wire rope	316SS	1
VLINEGDE004	V-LINE Straight bolt on cable guide	Galvanized	1

### PRODUCT CODE: VLINE.CABLE.SG.SL.XXX

Components	Description	Material	Qty
VLINE.SWAGELESS	V-LINE Swageless Termination	316SS	1
STAT.CABLE001	Cable: 8mm diameter, 7 x 7 wire rope	316SS	1
VLINEGDE004	V-LINE Straight bolt on cable guide	Galvanized	1



# V Line LADDER VERTICAL LIFELINES

## V-LINE WARNING COMPLIANCE SIGN



- Vertical lifeline warning compliance sign.
- Notes installer information, safe use and inspection details.

**PRODUCT CODE: VLINE.WARN**

**MATERIAL: ALUMINIUM**

## CABLE GUIDE POLE BOLT ON KIT - 90 DEGREE

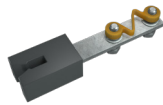


- Vertical lifeline 90 degree cable guide pole bolt on kit for use on ladder lifelines.
- Cable guides are used to stop cable from swaying, required every 8 metres.

**PRODUCT CODE: VLINEGDE001**

**MATERIAL: GALVANIZED**

## CABLE GUIDE POLE BOLT ON KIT - STRAIGHT



- Vertical lifeline straight cable guide pole bolt on kit for use on ladder lifelines.
- Cable guides are used to stop cable from swaying, required every 8 metres.

**PRODUCT CODE: VLINEGDE002**

**MATERIAL: GALVANIZED**

## CABLE GUIDE LADDER RUNG BOLT ON KIT - 90 DEGREE



- Vertical lifeline 90 degree cable guide bolt on kit for use on ladder lifelines.
- Cable guides are used to stop cable from swaying, required every 8 metres.

**PRODUCT CODE: VLINEGDE003**

**MATERIAL: GALVANIZED**

## CABLE GUIDE LADDER RUNG BOLT ON KIT - STRAIGHT



- Vertical lifeline straight cable guide bolt on kit for use on ladder lifelines.
- Cable guides are used to stop cable from swaying, required every 8 metres.

**PRODUCT CODE: VLINEGDE004**

**MATERIAL: GALVANIZED**

## CABLE GUIDE POLE MOUNTING BRACKET

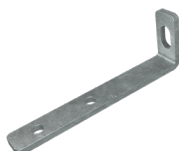


- Cable guide pole support brackets can be fastened with any M12 fastener capable of supporting 200kg. Alternatively, the brackets may be welded to metal poles. Any welds shall be suitably protected from corrosion with a minimum 75um or zinc rich primer.

**PRODUCT CODE: VLINE.PLT.CG**

**MATERIAL: GALVANIZED**

## CABLE GUIDE POLE MOUNTING BRACKET - EXTENDED



- Cable guide pole support brackets can be fastened with any M12 fastener capable of supporting 200kg. Alternatively, the brackets may be welded to metal poles. Any welds shall be suitably protected from corrosion with a minimum 75um or zinc rich primer.

**PRODUCT CODE: VLINE.PLT.CG.EXT**

**MATERIAL: GALVANIZED**

# V Line ACCESSORIES

## V-LINE FIXING BRACKET - TOP WELD ON



- V-Line top weld on support fixing bracket.

**PRODUCT CODE: VLINE.PLT.TOP**

**MATERIAL: 316SS**

## V-LINE FIXING BRACKET - BOTTOM WELD ON

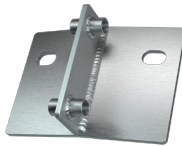


- V-Line bottom weld on support fixing bracket.

**PRODUCT CODE: VLINE.PLT.BTM**

**MATERIAL: 316SS**

## V-LINE FIXING BRACKET - TOP POLE BOLT ON

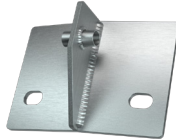


- V-Line top bolt on support fixing bracket.
- Fixing to Steel - M12 or M16 bolts as per section 3.2.4 of manual.
- Fixing to Concrete - M16 fasteners, embedment depth 95mm as per section 3.2.3 of manual.

**PRODUCT CODE: VLINE.PLT.TOP.POLE**

**MATERIAL: 316SS**

## V-LINE FIXING BRACKET - BOTTOM POLE BOLT ON

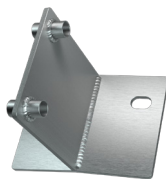


- V-Line bottom bolt on support fixing bracket.
- Fixing to Steel - M12 or M16 bolts as per section 3.2.4 of manual.
- Fixing to Concrete - M16 fasteners, embedment depth 95mm as per section 3.2.3 of manual.

**PRODUCT CODE: VLINE.PLT.BTM.POLE**

**MATERIAL: 316SS**

## V-LINE FIXING BRACKET - TOP POLE BOLT ON EXTENSION



- V-Line top bolt on support fixing bracket, extended 100mm.
- Fixing to Steel - M12 or M16 bolts as per section 3.2.4 of manual.
- Fixing to Concrete - M16 fasteners, embedment depth 120mm as per section 3.2.3 of manual.

**PRODUCT CODE: VLINE.PLT.TOP.POLE.EXT**

**MATERIAL: 316SS**

## V-LINE FIXING BRACKET - BOTTOM POLE BOLT ON EXTENSION



- V-Line bottom bolt on support fixing bracket, extended 100mm.
- Fixing to Steel - M12 or M16 bolts as per section 3.2.4 of manual.
- Fixing to Concrete - M16 fasteners, embedment depth 120mm as per section 3.2.3 of manual.

**PRODUCT CODE: VLINE.PLT.BTM.POLE.EXT**

**MATERIAL: 316SS**

## V-LINE BOLT ON STEEL POLE 300mm



- V-Line top or bottom, bolt on support fixing bracket.
- Fixing to Steel - M12 or M16 bolts as per section 3.2.4 of manual.
- Fixing to Timber - M12 as per section 3.2.5 of manual.

**PRODUCT CODE: VLINE.POST.300**

**MATERIAL: GALVANIZED**



**SafetyLink®**  
*Innovative  
Fall Protection*

**Asia-Pacific/The Americas**  
**info@safetylink.com**  
**1300 789 545 | +61 (0)2 4964 1068**

**New Zealand Distributor**

**Total Height Safety Ltd**

**0508 443 444**

**Info@TotalHeightSafety.co.nz**



For further information and to order our products visit our website.

[www.totalheightsafety.co.nz](http://www.totalheightsafety.co.nz)